

# Partnership Levels



## WATT PARTNER: \$1,000

- » Social Media Thank You Note
- » Certificate

## KILOWATT PARTNER: \$5,000

- » Social Media Recognition Event
- » Social Media Thank You Note
- » Certificate

## MEGAWATT PARTNER: \$10,000

- » Name or Logo on Park Plaque
- » Social Media Recognition Events
- » Social Media Thank You Note
- » Certificate

## GIGAWATT PARTNER: \$25,000

- » Invitation to Ribbon Cutting Ceremony and Special Recognition
- » Thank You Plaque
- » Name or Logo on Park Plaque
- » Social Media Recognition Events
- » Social Media Thank You Note

## TERAWATT PARTNER: \$50,000

- » Invitation to Ribbon Cutting and Ground Breaking Ceremonies and Special Recognition
- » Thank You Plaque
- » Name or Logo on Park Plaque
- » Social Media Recognition Events
- » Social Media Thank You Note

## POWER PARTNER: \$100,000

- » Identification as Sponsor on Publications and Special Recognition
- » Invitation to Ribbon Cutting and Ground Breaking Ceremonies
- » Thank You Plaque
- » Name or Logo on Park Plaque
- » Social Media Recognition Events
- » Social Media Thank You Note

If you would like to partner with us to help complete our dream, please contact us at:

## Sacramento Parks Foundation



2201 Cottage Way  
Sacramento, CA 95825



916.825.0197 [Mike Grace]



SacParksFoundation@gmail.com



SacParksFoundation.org



# Partnership Opportunities

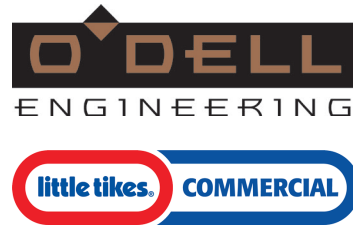


emPOWERment  
park AN INCLUSIVE PLAY PARK

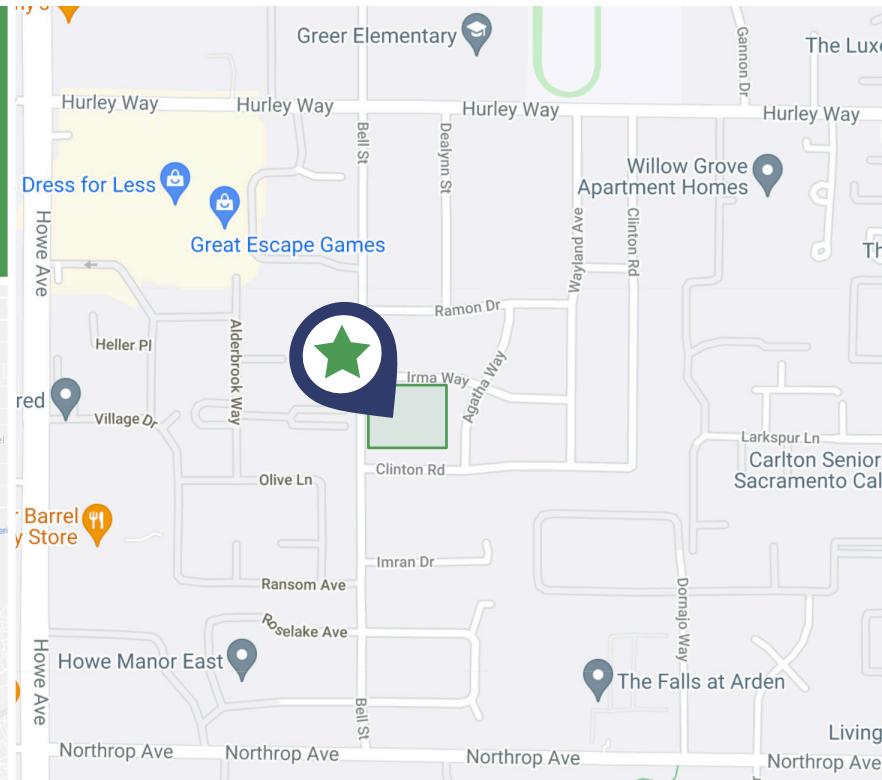


# Arden Arcade needs a place where children of ALL ABILITIES can play together and enjoy the fun of being kids in an all-inclusive play park!

Thanks to Sacramento Municipal Utilities District (SMUD), Proposition 68 (State of California Parks and Water Bond Act of 2018), and O'Dell Engineering, the Sacramento Parks Foundation is developing an All-inclusive Play Park for the Arden Arcade Community.



emPOWERment park will be located on the corner of Bell Street and Irma Way in a low-income area with limited access to parks.



We're almost fully funded - help us develop this exciting Play experience - it's for the kids!

## Endorsements



“emPOWERment Park will make play possible for our entire community as the first-fully inclusive park and playground in Arden-Arcade. It will be a place where people of all ages can come and play together in the same way, no matter their abilities.”

**Rich Desmond** | Sacramento County Supervisor, Area 3

“There aren't too many opportunities to improve the lives of children with special needs, and improve an entire neighborhood and region at the same time. emPOWERment Park is that opportunity. SMUD is proud to support this project, contributing an unused parcel of land. The project is designed for kids with all levels of ability and it's in a neighborhood that has been ignored. Empowerment Park will be a catalyst for positive change for thousands of individual children who play there and for the neighborhood which deserves the attention.”

**Gregg Fishman** | SMUD Board, Ward 3

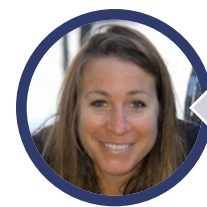


“As a community partner, the Sacramento County Disability Advisory Commission (DAC) wholeheartedly supports the creation of the emPOWERment Park in the Arden Arcade area. We are especially pleased that this park's play facilities and equipment will be fully accessible and usable by users with disabilities. This means that the County will have its first truly inclusive park serving all users with and without disabilities.”

**Sacramento County Disability Advisory Commission**

“The Sacramento community welcomes the emPOWERment Park. Outdoor play in a convenient neighborhood location is necessary for all developmental stages. Thanks for providing a stimulating, well planned design where individuals of all abilities can initiate friendships and improve social skills, increase motor skills and reduce anxiety.”

**Dorana Prohaska** | Alta California Regional Center



“The Greater Sacramento will benefit from the addition of a universally designed and inclusive playground/park. Providing an opportunity for multi-generations and ability levels to play together fosters fun and positive engagement creating a more inclusive community. Playgrounds and parks that are accessible both in architecture as well as activity options positively affect the quality of life of those engaged. As a Certified Therapeutic Recreation Specialist, I believe the addition of this park will enhance and potentially motivate individuals to get active and maintain a greater health and wellness in nature spaces.”

**Dr. Jamie Hoffman** | CTRS Associate Professor, Recreational Therapy Coordinator